

Quick Reference Guide OpenCom 31

Many thanks for choosing this DeTeWe product. Our products meet the highest quality demands and are outstandingly designed. This short guide describes the first steps you need to take, from unpacking the OpenCom 31 to using it for the first time. In order to be able to use all the convenient features of the telephone, please refer to the comprehensive User Guide supplied.

Scope of delivery



1 AC adapter



1 user guide



1 USB cable



1 ISDN cable



1 CD-ROM

- 1 quick reference guide for analogue devices
- 1 "Quick Reference Guide" (this document)
- 1 A sheet containing information on the additional functions that can be activated by means of the licence.

Note

Systems with the item no. 69883.031 up to 69883.204 on the packaging are supplied with an additional crossover cable for connecting your DSL modem. Systems with the item no 69883.205 and higher on the packaging use the normal patch cable supplied with your DSL modem.

Safety precautions

Do not open the housing. Unauthorised opening of the housing and improper repairs can endanger the user and void the warranty.

Do not allow liquid to penetrate inside the OpenCom 31 as this could lead to electric shocks or short circuits.

Do not install the OpenCom 31 during a thunderstorm or attach or remove any cables, as this could lead to electric shocks.

The OpenCom 31 is designed for operation inside buildings only.

Do not lay any of the cables outdoors.

Lay the cables so that they are cannot be walked on or tripped over.

Please adhere to the safety precautions mentioned in the comprehensive user guide.

Minimum requirements for the PC

- IBM-compatible PC with a hard disk and CD-ROM drive
- CPU speed of 400 MHz or higher
- Main memory (RAM) of at least 128 MB
- Microsoft Windows 2000/XP
- One free USB port
- 10 MB of free space on the hard disk drive
- Optionally, a full-duplex sound card and a printer

Starting the installation software

Before commencing with the installation of the new software, please ensure that any ISDN installation present on your PC is uninstalled or deactivated. No other CAPI drivers may be installed, as this could lead to conflicts between the different CAPI drivers. If you want to avoid this, select "Installing the PC software without CAPI" (see User Manual).

1. Before installing the OpenCom 31, please boot your PC and start Windows. Keep your Windows CD ready as you may be prompted to insert it during the installation procedure.
2. If you subsequently want to connect your PC to the OpenCom 31 by means of the USB cable supplied, you must install the PC software with the necessary drivers before attaching the USB cable.
3. Ensure that other programs do not interfere with the installation while it's going on. This also applies for e-mail programs and virus scanners, for example, all of which you should deactivate beforehand.
4. Insert the "OpenCom 31" CD-ROM in the PC's CD-ROM drive. If Autostart is active, the following screen appears. If the CD-ROM does not start automatically, please start it manually by clicking on the "Set-up" program in the "OpenCom" directory on the CD-ROM.



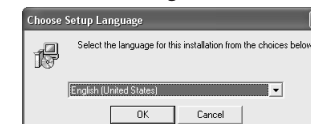
5. In this screen you can select the programs and files you want to install. Clicking on the highlighted entry starts the respective installation procedure. Click on "Software installation with CAPI".

The program modules for CAPI, TAPI, HomeNetControl and OpenCom Control are now installed. Depending on how your PC / operating system has been configured, a warning may appear whenever you try to install software as described here (see illustration, or similar).



Click on "Unblock" to allow the software to be installed.

6. In the following menu you can select the software language.
Note This setting only installs the PC software in English. If you also require the Web Configurator in English, you will have to flashload the English firmware.






7. Select Complete or Custom installation by highlighting the option.



Additional explanations regarding the current installation appear in the respective

screens. On completion of the installation you will be prompted to restart your PC.

8. Restart your PC.

You will see the program symbols for CAPI , OpenCom Control , Control and HomeNetControl  in the Autostart line of your operating system. Now connect the PC to the OpenCom 31 via a USB interface. The hardware will then be detected automatically and the driver installation program will start. Follow the instructions on the screen.

9. Start the set-up program on the installation CD-ROM again, either by re-inserting it in the CD-ROM drive or by double-clicking on "Set-up" in the "OpenCom" directory on the CD-ROM.

10. This time, select **WinSuite**. Ignore any error messages regarding failure to establish the router connection that may be output by HomeNetControl: router connection is only

possible when the router and the system have been configured.

11. Follow the instructions on the screen.

12. The WinSuite configuration wizard starts automatically after installation. The wizard can subsequently be started whenever required by clicking on "Start -> Programs -> WinSuite". Follow the instructions on the screen.

Setting up Internet access / connecting to the Internet

1. **On Windows PCs with the OpenCom 31 software already installed:** Start the Web Configurator by double-clicking on the **OpenCom31 Configuration** shortcut.

2. Place the mouse cursor on the "Password" field and enter "0000" (four zeros), then click on **OK**.

3. Click on the "**Internet access**" item in the menu.

4. Key in your ISDN access data. Please note the following format for user names in the case of DSL (without any blanks):

T-Online: [subscriber ID]
[T-Online number] # [co-user's number]@t-online.de.

AOL: [AOL user name]@de.aol.com.
Click on "**Save**" to store the data.

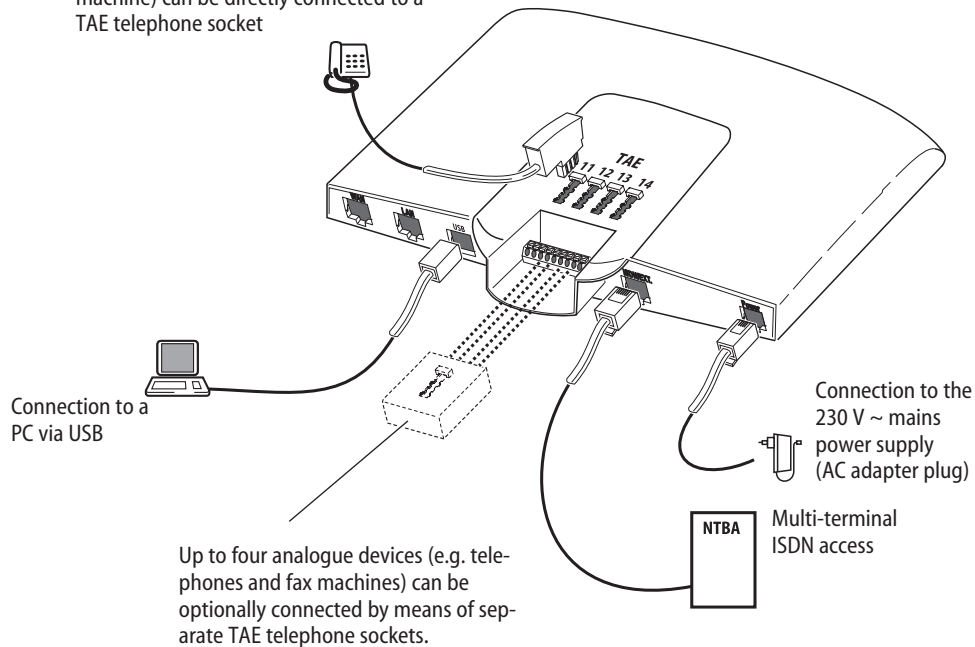
5. Check whether your Web browser can set up a connection to the Internet. If this fails, make sure that all the cables are firmly plugged in and check the settings.

Interpreting the LEDs

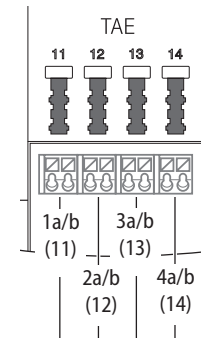
- **Power** is illuminated: the power supply is on.
- **Call info** is illuminated: call data has been saved;
Call info flashes: this is an overwrite warning that appears when more than 400 data records have already been saved.
- **Message** flashes: there are messages waiting (e.g. SMS).
- **Internet** (green) off: No Internet link.
Internet (green) flashes: The router is barred.
Internet (green) is illuminated: The router is connected to the Internet.
- **LAN:** has no particular function in the basic version.
- **USB** is illuminated: the USB interface to the connected PC is busy;
USB flickers: data is being transferred to the connected PC.
- **Festnetz** is illuminated: a B-channel is busy.
Festnetz flickers: both B-channels are busy.
- **VoIP:** has no particular function in the basic version.

Connecting the adapter plug, the analogue equipment, ISDN and the PC

Up to four analogue devices (e.g. 3 telephones and a fax machine) can be directly connected to a TAE telephone socket



Analogue connectors and the TAE sockets



Insert the TAE telephone plugs of your analogue equipment directly into the sockets provided for the purpose or wire appropriate remote two-wire TAE sockets.

The connectors are assigned as shown in the sketch (1a/b = internal tel. no. "11" / 2a/b = internal tel. no. "12" / 3a/b = internal tel. no. "13" / 4 a/b = internal tel. no. "14"). Remote sockets must not be located any further than 150 m away from the OpenCom 31.

DeTeWe Systems GmbH,
Zeughofstrasse 1, 10997 Berlin

Right to changes reserved

Created in December 2005